

A lovely Day....

BMJ

Bass

TEMPO: 92 bpm

Music: Bill Withers

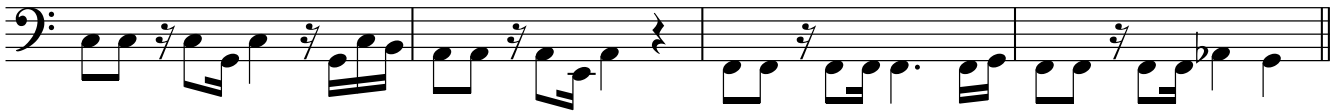
Arr.: Volker Zimmer

18.10.19/ Cologne, Germany

INTRO



5

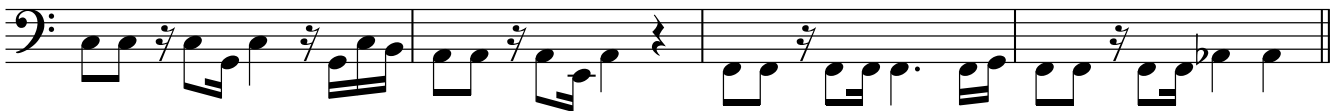


9

Strophe 1



13

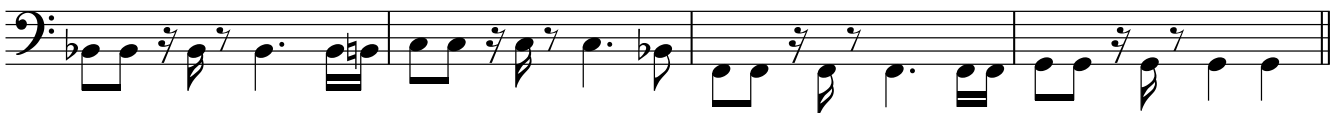


17

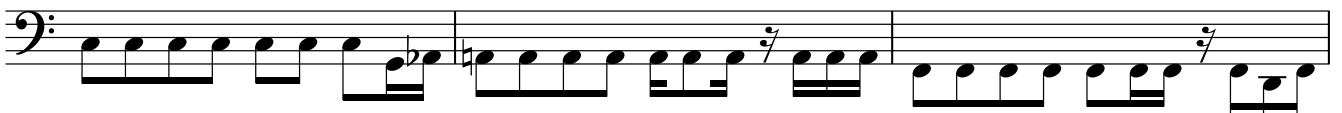
Bridge



21



25

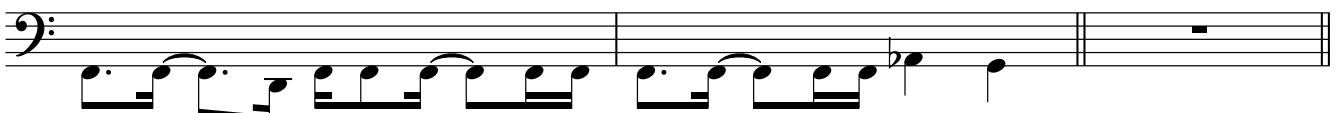


28



31

Break 1

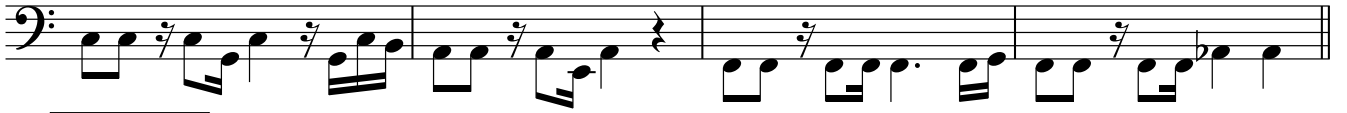


34 Strophe 2



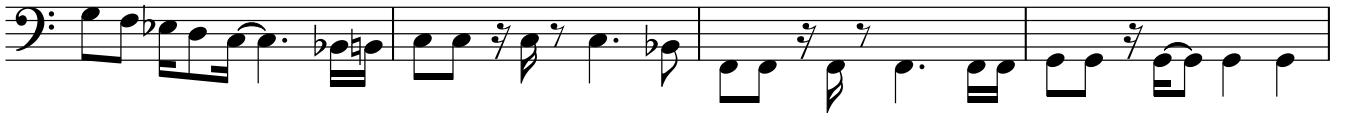
First staff of music for Strophe 2, measures 34-37. The bass line features a rhythmic pattern of eighth and sixteenth notes with accents.

38



Second staff of music for Strophe 2, measures 38-41. The bass line continues the rhythmic pattern from the previous staff.

42 Bridge 2



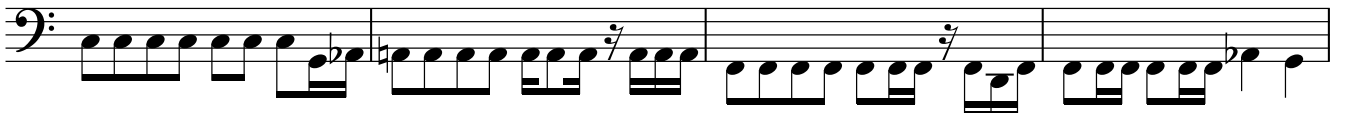
First staff of music for Bridge 2, measures 42-45. The bass line features a more complex rhythmic pattern with slurs and accents.

46



Second staff of music for Bridge 2, measures 46-49. The bass line continues the complex rhythmic pattern.

50 Refrain 2



First staff of music for Refrain 2, measures 50-53. The bass line features a steady eighth-note pattern.

54



Second staff of music for Refrain 2, measures 54-56. The bass line continues the steady eighth-note pattern.

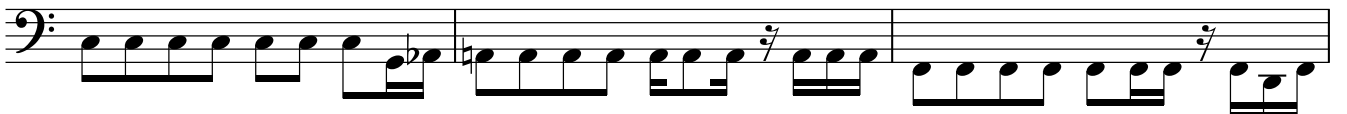
57

Break 2



Staff of music for Break 2, measures 57-58. The bass line features a few notes followed by a double bar line and a rest.

59 SOLO-PARTS



First staff of music for SOLO-PARTS, measures 59-61. The bass line features a steady eighth-note pattern.

62



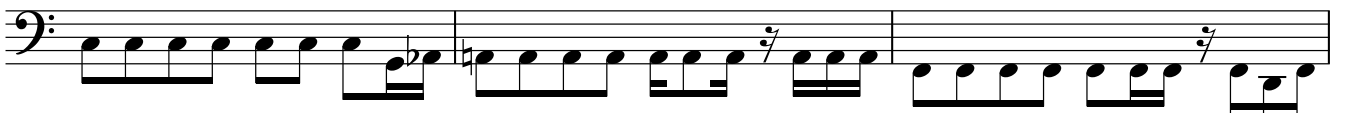
Second staff of music for SOLO-PARTS, measures 62-63. The bass line continues the steady eighth-note pattern.

64



Third staff of music for SOLO-PARTS, measures 64-66. The bass line continues the steady eighth-note pattern.

67



Fourth staff of music for SOLO-PARTS, measures 67-69. The bass line continues the steady eighth-note pattern.

